

NO BRA NEEDED! A TANK WITH A BUILT-IN BRA..



**District Threads® -
Junior Ladies Tank
with Built-in-Bra.
DT230**

A stretchy, strappy tank,
offering seamless support.

- 5.6-ounce, 95/5 cotton/
spandex
- Satin straps
- Self-fabric shelf bra with
elastic hem

Juniors Sizes: S-XXL; Plus 1X,
Plus 2X

Available colors: Cranberry,
MidnightBlack, PaleBlue,
PalePink, White

S-XL - \$22.75

XXL - \$24.00

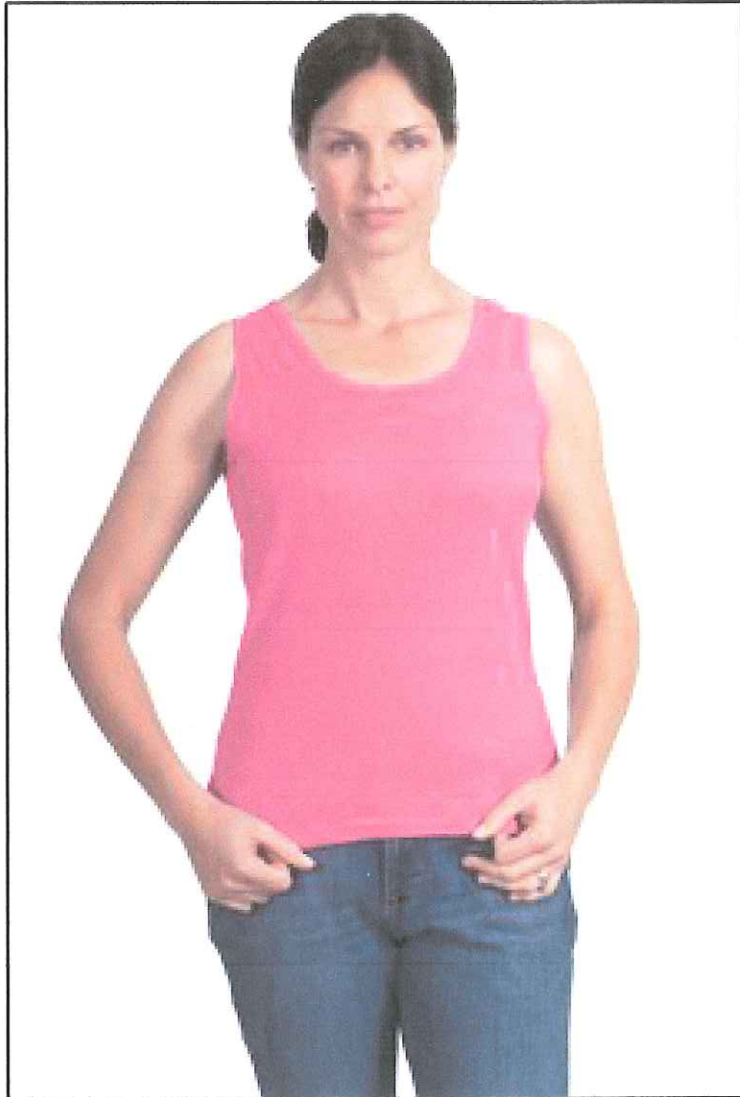
1X - \$28.75

2X - \$30.75

**INCLUDES GCLA LOGO
ACROSS FRONT**

GCLA THANKS YOU FOR YOUR SUPPORT!

GET IT WHILE ITS HOT PINK!!! A PERFECT TANK FOR FISHING.



Hanes® - Classic Fit Tank. S14C

Smooth knit styling makes this classic fit tank a must-have. Wide straps and a shallow scoop neck provide extra coverage and easy comfort.

- 6.1-ounce, 100% ring spun combed cotton
- 1x1 rib knit construction

Ladies Sizes: S-2XL

Available colors: Black, Canary, HeatheredSand, Lavender, Pink, White

S-XL \$21.50
2XL \$23.50
INCLUDES GCLA LOGO

GCLA THANKS YOU FOR YOUR SUPPORT!

HOT HOT...SLIP THIS ONE ON FOR THE COOL BREEZE OF SUMMER AND YOU'LL LOOK HOT!!!



**District Threads® -
Junior Ladies Tank with
Built-in-Bra. DT230**

A stretchy, strappy tank, offering seamless support.

- 5.6-ounce, 95/5 cotton/spandex
- Satin straps
- Self-fabric shelf bra with elastic hem

Available colors:
Cranberry,
MidnightBlack, PaleBlue,
PalePink, White

Junior Sizes:
S-XL- \$22.75
XXL -\$24.00
1X - \$28.75
2X - \$ 30.75

GCLA THANKS YOU FOR YOUR SUPPORT!